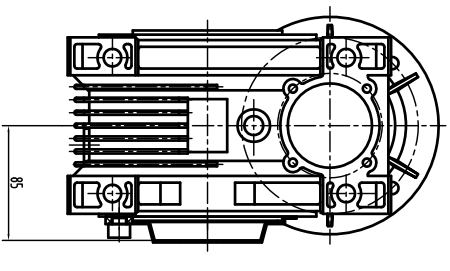
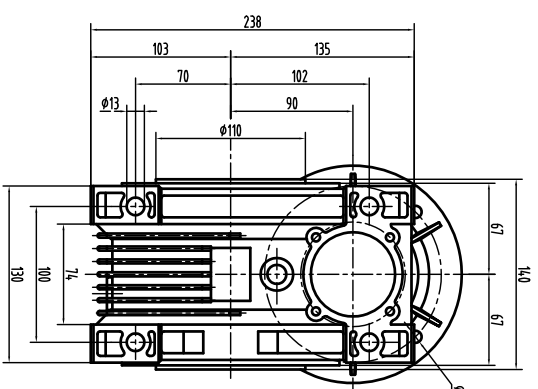
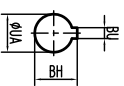
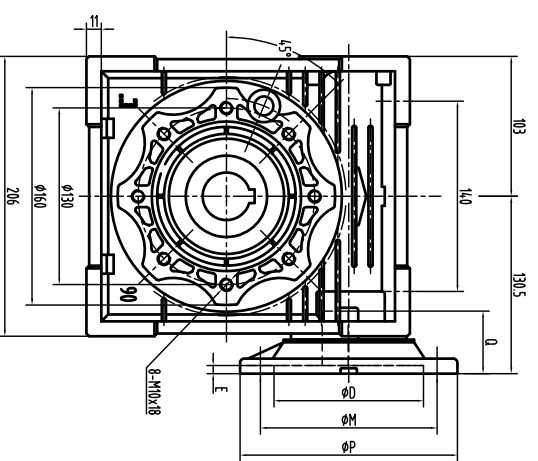


Motor flange mounting dimensions

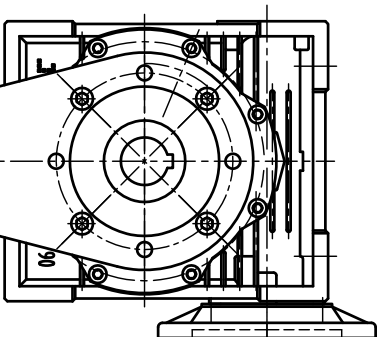
Dim	D	M	P	d	BH	BU	E	Q	The hole diameter of shaft UA										
									Ratio i										
Motor flange	80	100	120	7	21.8	6	6	4.0	7.5	10	15	20	25	30	40	50	60	80	100
80B14	80	100	120	7	21.8	6	6	4.0	-	-	-	-	-	-	-	-	-	-	19
80B5	130	165	200	11	21.8	6	6	4.0	-	-	-	-	-	-	-	-	-	-	19
90B14	130	165	200	9	27.3	8	6	4.8	-	-	-	-	-	-	-	-	-	-	24
90B5	130	165	200	11	27.3	8	6	4.8	-	-	-	-	-	-	-	-	-	-	24
100/112B14	110	130	160	9	31.3	8	6	5.6	-	-	-	-	-	-	-	-	-	-	28
100/112B5	180	215	250	14	31.3	8	6	5.6	-	-	-	-	-	-	-	-	-	-	28

Output flange mounting dimensions

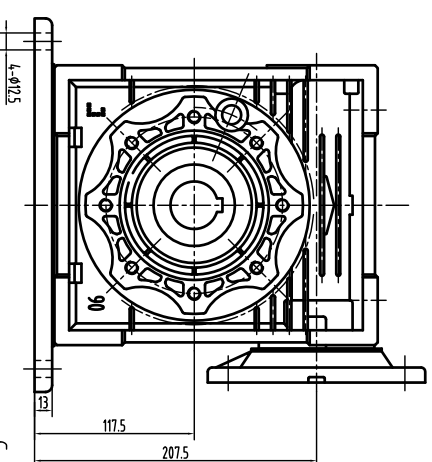
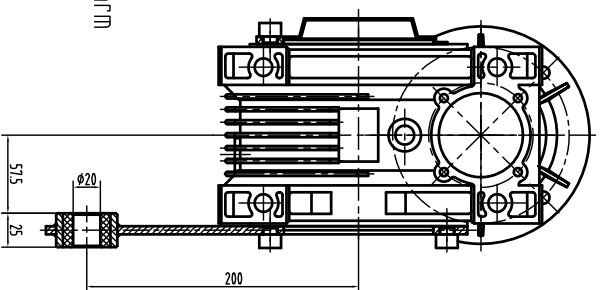
Dim	KA	KB	KC	KN	KM	KO	KP	QD	KT	KW
Output flange	111	13	6	152	175	14	210	200	-	4.5°
FA	122	18	6	180	215	14	250	-	105	4.5°
FB	110	17	6	130	165	11	200	-	-	4.5°
FD	151	13	6	152	175	14	210	200	50	4.5°



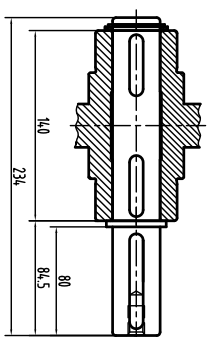
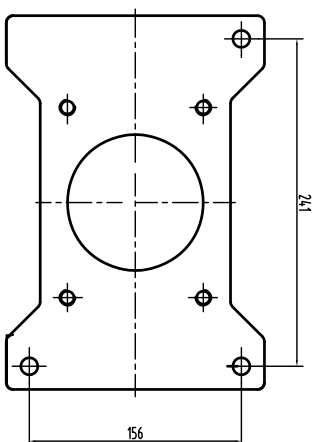
D-protective cover



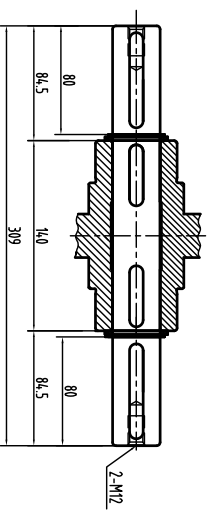
E-torque arm



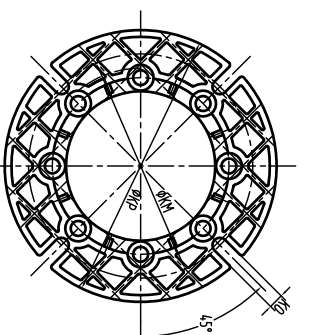
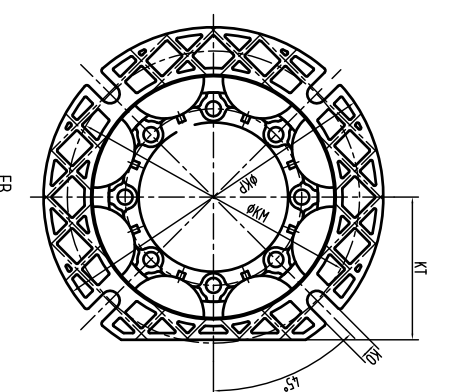
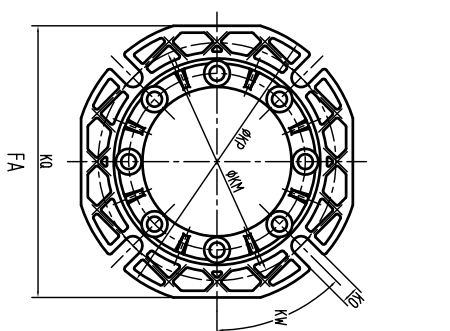
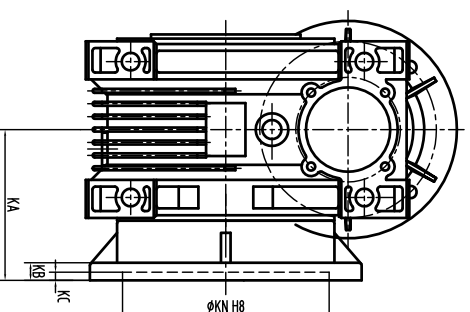
C-base plate



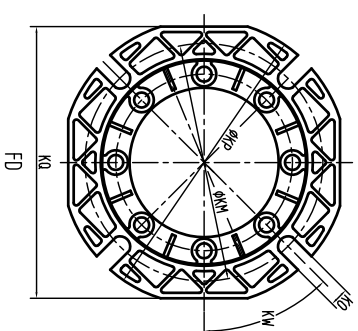
A-single output shaft



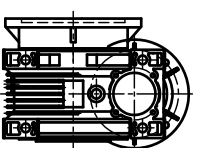
B-doubel output shaft



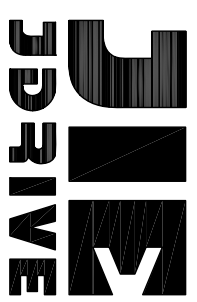
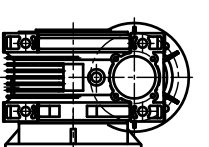
Output flange mounting dimensions



U



Q



Worm Gear